

-A OPTION

Magnetic Field Sensing | Technical Specifications

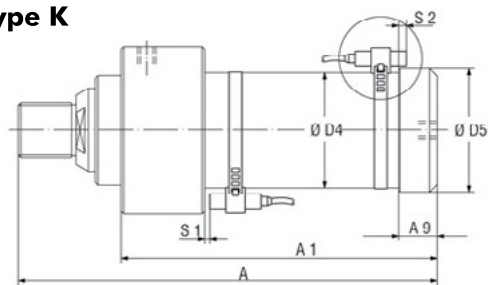
Pneumatic Power Cylinders Type K and WK with end position control by magnetic field sensors.

- For the sizes
K and WK 400.... , K and WK 600... ,
K and WK 1000.... K and WK 3000...,
K and WK 4500...
- Change of Model
Indicate „-A” at the end of Model instead of „-1”
for standard version!
Example:
K400 – 15 – 6 – 1 change to K400 – 15 – 6 – A
WK 3000 – 50 – 6 – 1 change to WK 3000 - 50 – 6 – A
- Change in construction
Only the dimensions Ø D4, Ø D5, A/A 1 and A9 are
different to the standard version.



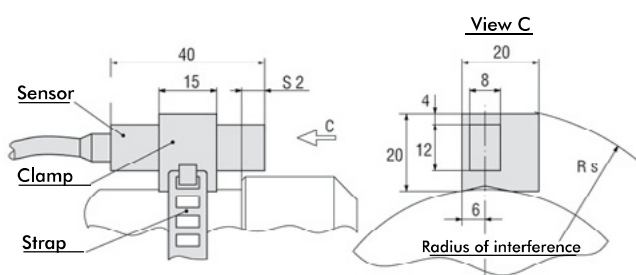
- Standard equipment (as shown above)
Pneumatic Power Cylinders with “-A” at the end of
Model are completely furnished with a magnetic
piston ring and with two mounted sensor sets
(Model SMB-102157, consisting of magnetic field
sensor with 3m cable, clamp and strap)

Type K

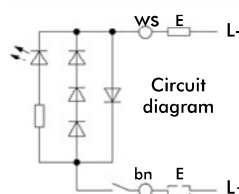


| Switching points of sensors | | | **Differences of dimensions compared with standard version | | | | |
|-----------------------------|-----|-----|--|------|-------|------|----|
| For sizes | S1* | S2* | Ø D4 | Ø D5 | A/A 1 | A9 | Rs |
| K 400-...-A | 5 | 12 | - | - | +15 | - | 44 |
| K 1000-...-A | 10 | 18 | - | - | +15 | - | 56 |
| K 3000-...-A | 5 | 14 | 90 | 97 | - | 30 | 67 |
| K 45000-...-A | 5 | 12 | 106 | 113 | - | 28,5 | 75 |

* Approx. data, because of magnet field variations. S1 refers to the max. power stroke and enlarges up to 60 mm, when smaller power strokes are used.

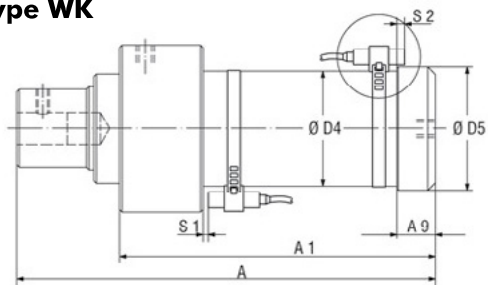


Circuit diagram and technical data of sensor set Model **SMB-102157**, consisting of magnetic field sensor with 3 m cable, clamp and strap (2 sets per cylinder are standard equipment).



| | |
|-------------------|-----------------------|
| Switching voltage | 10...250 VAC/DC |
| Switching current | 0,5 A |
| Switching power | 20 W/30 VA |
| Function | normally open contact |
| Protection class | IP 67 (DIN 40050) |
| Indicator | LED |

Type WK



| Switching points of sensors | | | **Differences of dimensions compared with standard version | | | | |
|-----------------------------|-----|-----|--|------|-------|------|----|
| For sizes | S1* | S2* | Ø D4 | Ø D5 | A/A 1 | A9 | Rs |
| WK 400-...-A | 5 | 12 | - | - | +15 | - | 44 |
| WK 1000-...-A | 10 | 18 | - | - | +15 | - | 56 |
| WK 3000-...-A | 5 | 14 | 90 | 97 | - | 30 | 67 |
| WK 45000-...-A | 5 | 12 | 106 | 113 | - | 28,5 | 75 |

* Approx. data, because of magnet field variations. S1 refers to the max. power stroke and enlarges up to 60 mm, when smaller power strokes are used.

-K OPTION

Magnetic Field Sensing | Technical Specifications



Sensor cage for T-slot proximity sensor

- **For the sizes**
K and WK 400.... , K and WK 600... , K and WK 1000.... ,
K and WK 3000..., K and WK 4500...
- **Change of Model**
Indicate "-K" at the end of Model instead of "-A" for standard version.
Example:
K400 – 15 – 6 – A change to K400 – 15 – 6 – K
WK 3000 – 50 – 6 – A change to WK 3000 - 50 – 6 – K
- **Benefits:**
Small radii of interference.
Customer specific T-slot sensors are usable.
- **Standard equipment:**
Pneumatic power cylinder with "-K" at the end of Model number are supplied with mounted sensor cages but without T-slot sensors.